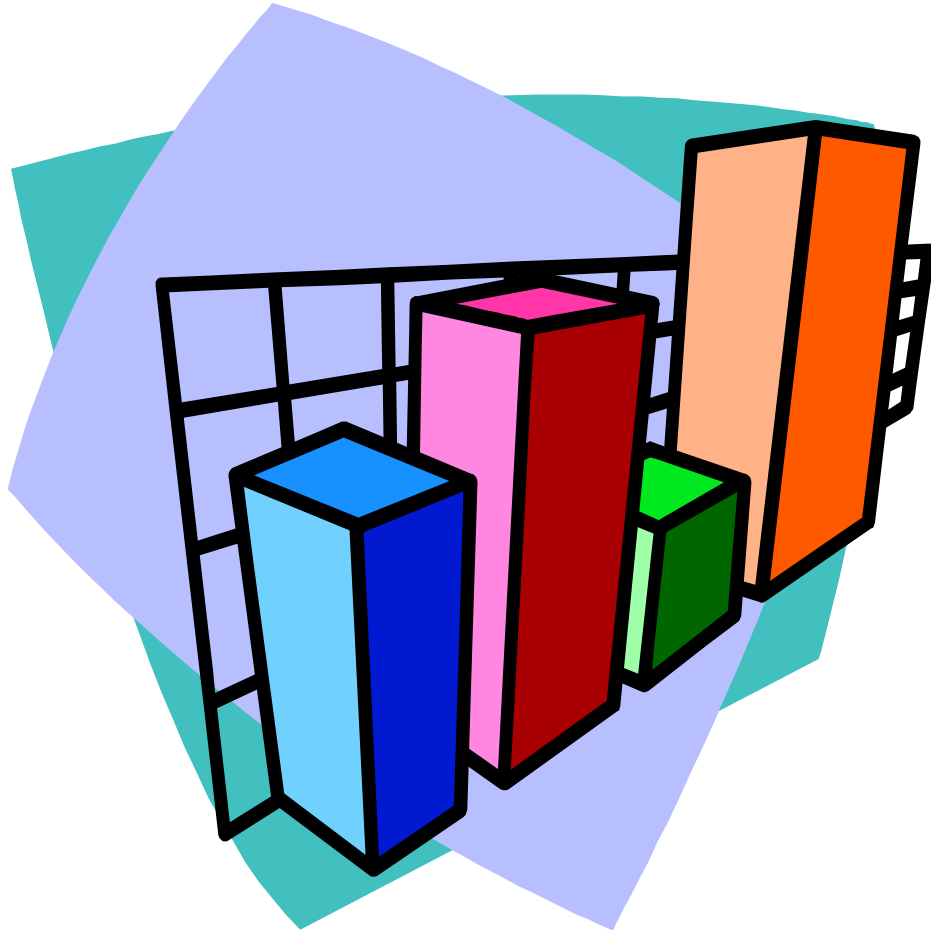


# Charts and Graphs

---



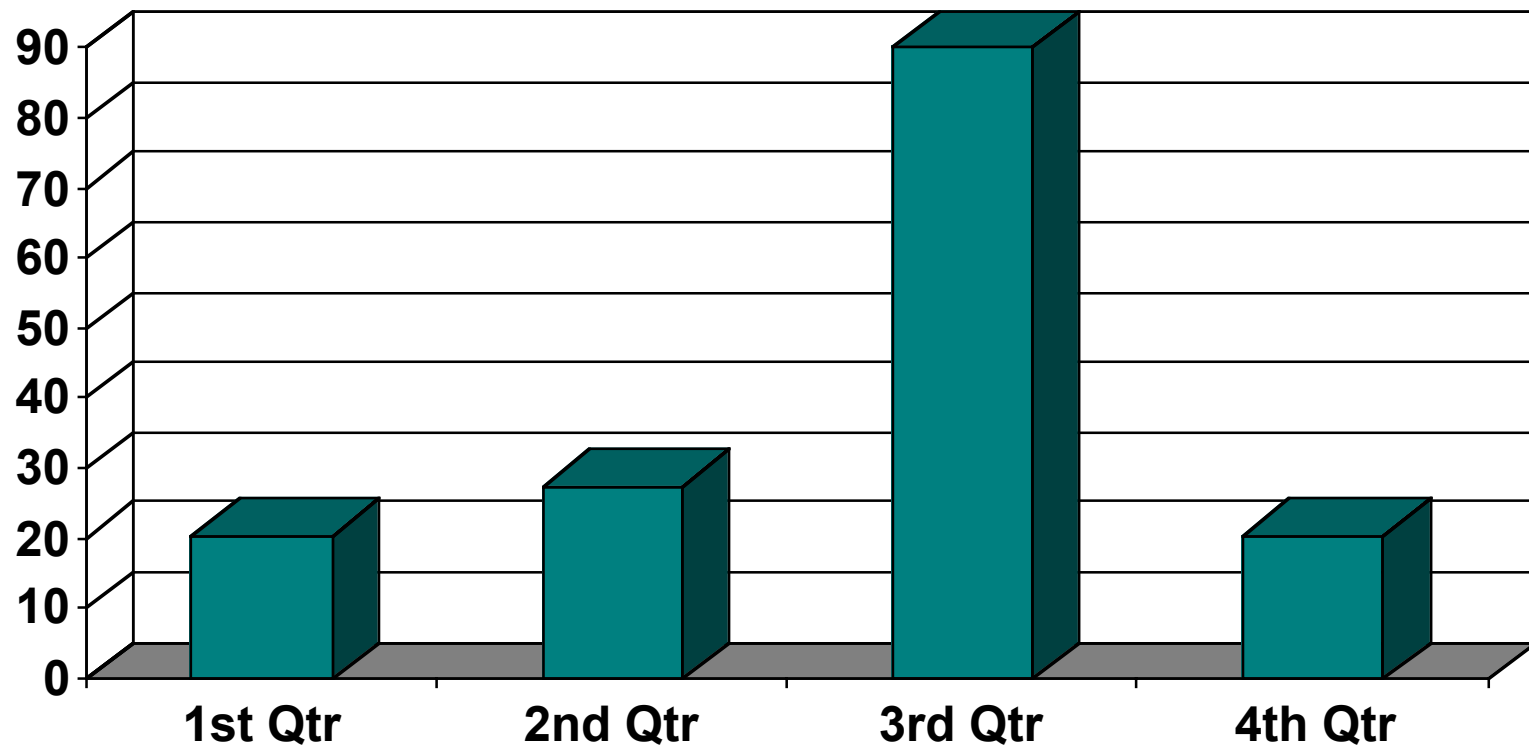
*The principles  
of displaying  
your data  
with accuracy  
and finesse*

Presented by Debbie Tschirgi, Ed Tech Director, ESD 112

# Dollars Spent on Phone Bills at the Brown's House

## Year: 1999

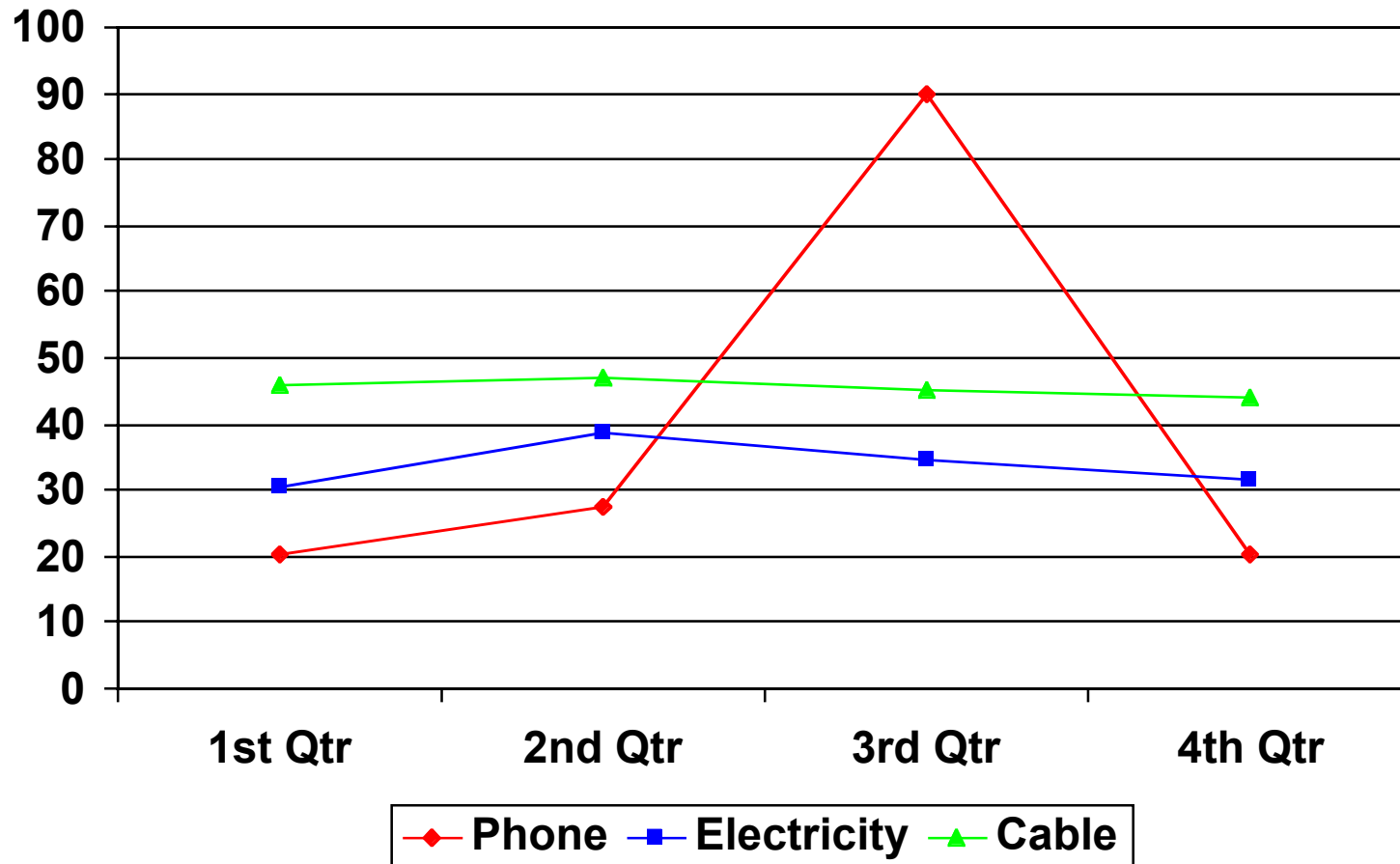
---



With a bar graph, you can compare one piece of data with data from the same series, or with the data from a different category.

# Dollars Spent on Utilities at the Brown's House

## Year: 1999

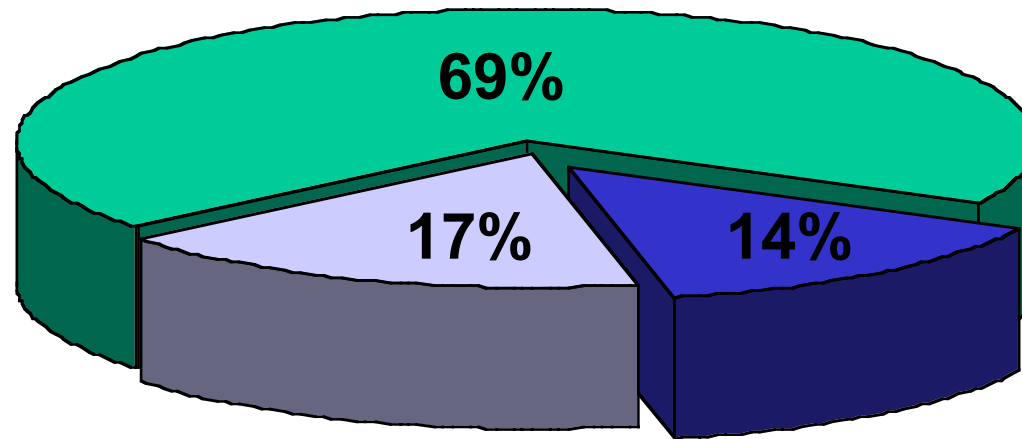


**A line chart shows trends in data at equal intervals.**

# Dollars Spent on Utilities at the Brown's House

## Year: 1999

---



■ Electricity

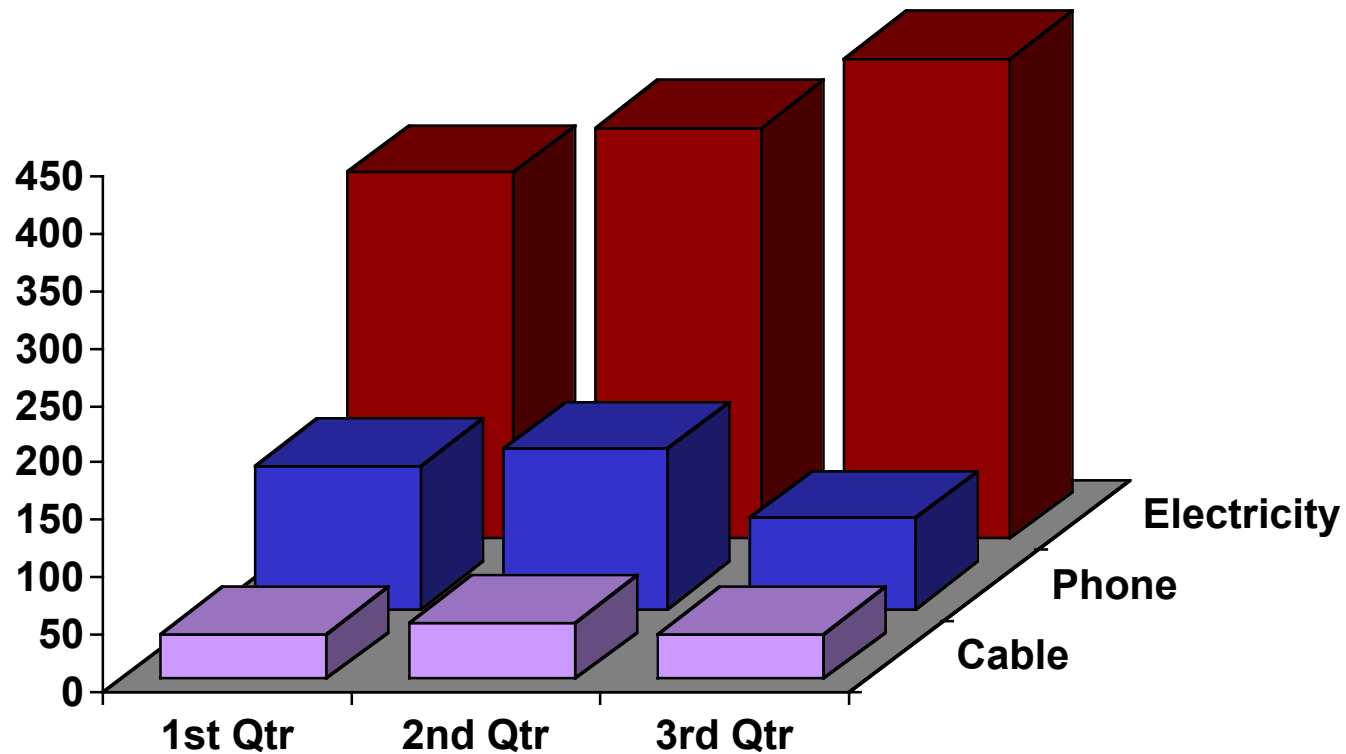
■ Phone

■ Cable

A pie chart shows how the parts compare to the whole.

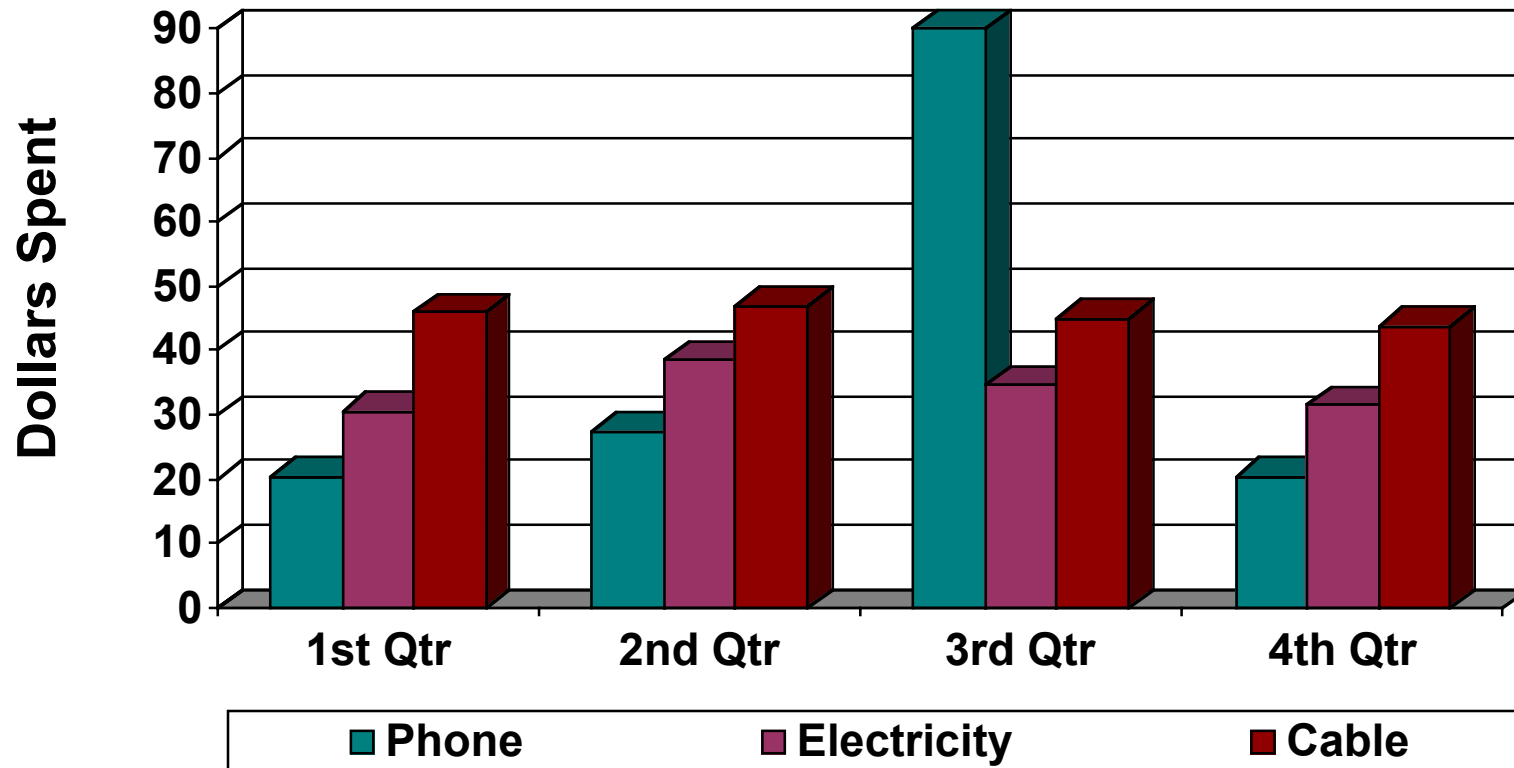
# Dollars Spent on Utilities at the Brown's House Year: 1999

---



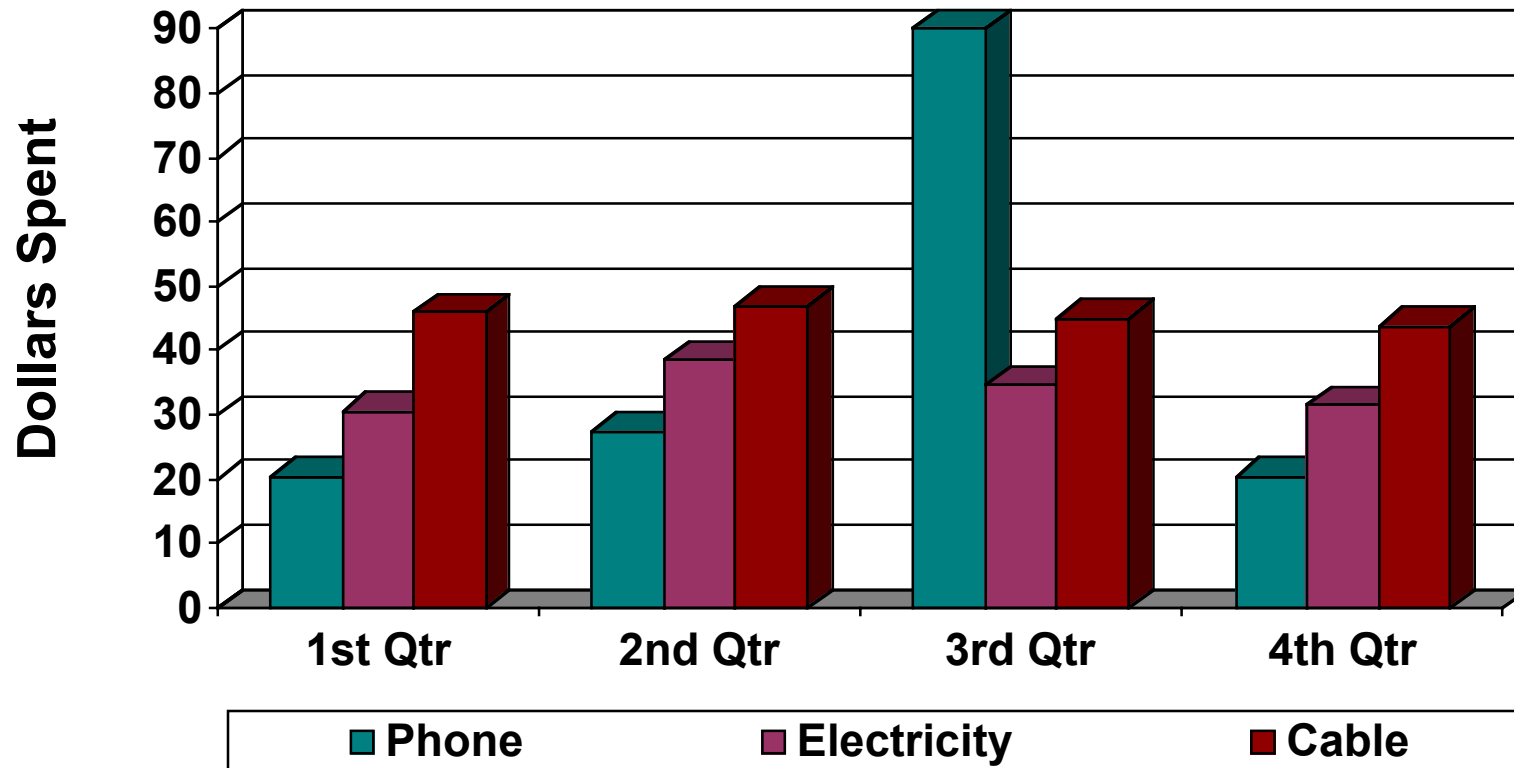
**A 3-D chart can show the data in three dimensions.  
But...is it the best way to display the data?**

# Dollars Spent on Utilities at the Brown's House Year: 1999



The chart is labeled with a clear action statement.

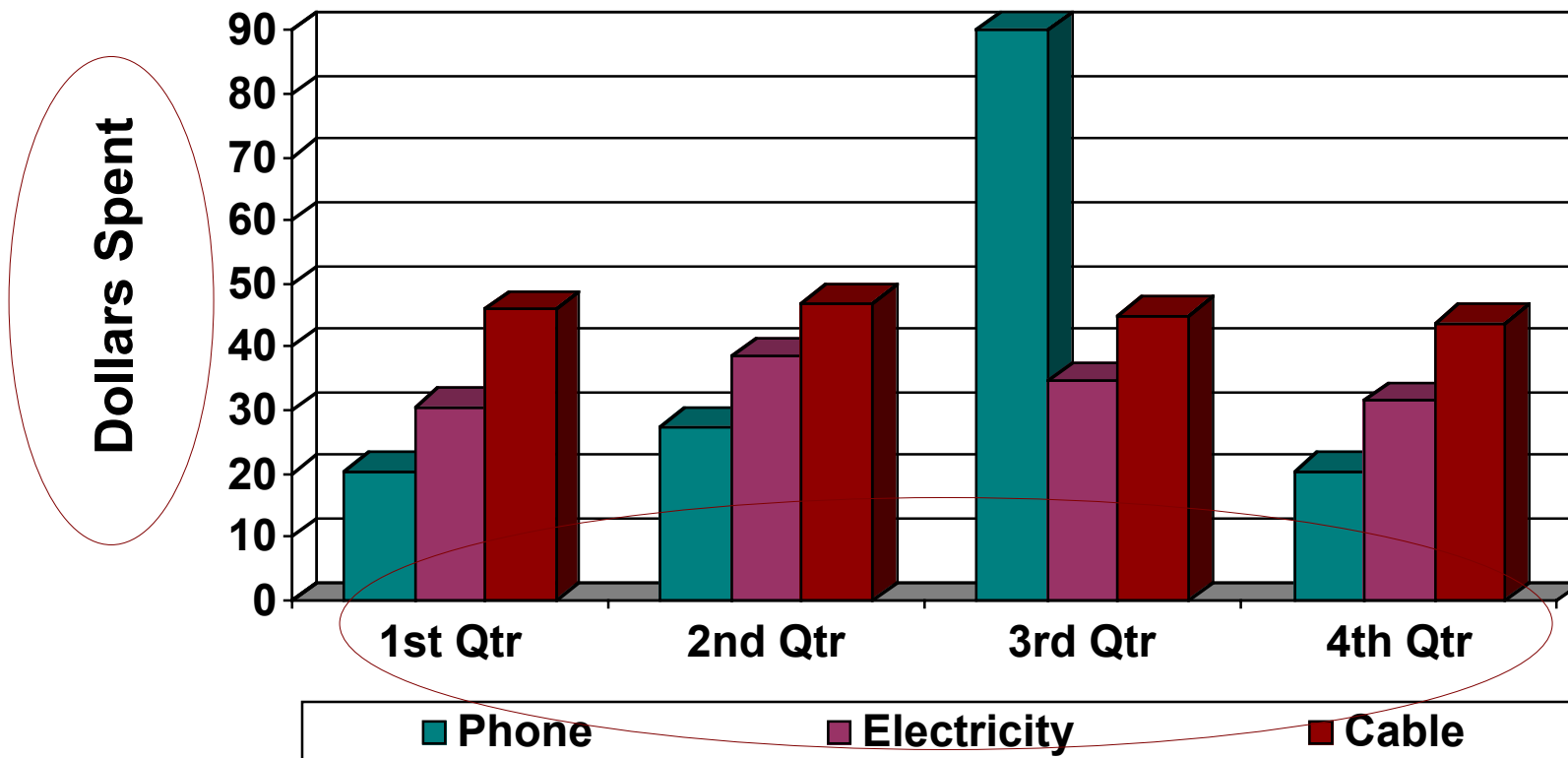
# Dollars Spent on Utilities at the Brown's House Year: 1999



The chart identifies the who • what • when • where • and why for the data.

# Dollars Spent on Utilities at the Brown's House

## Year: 1999

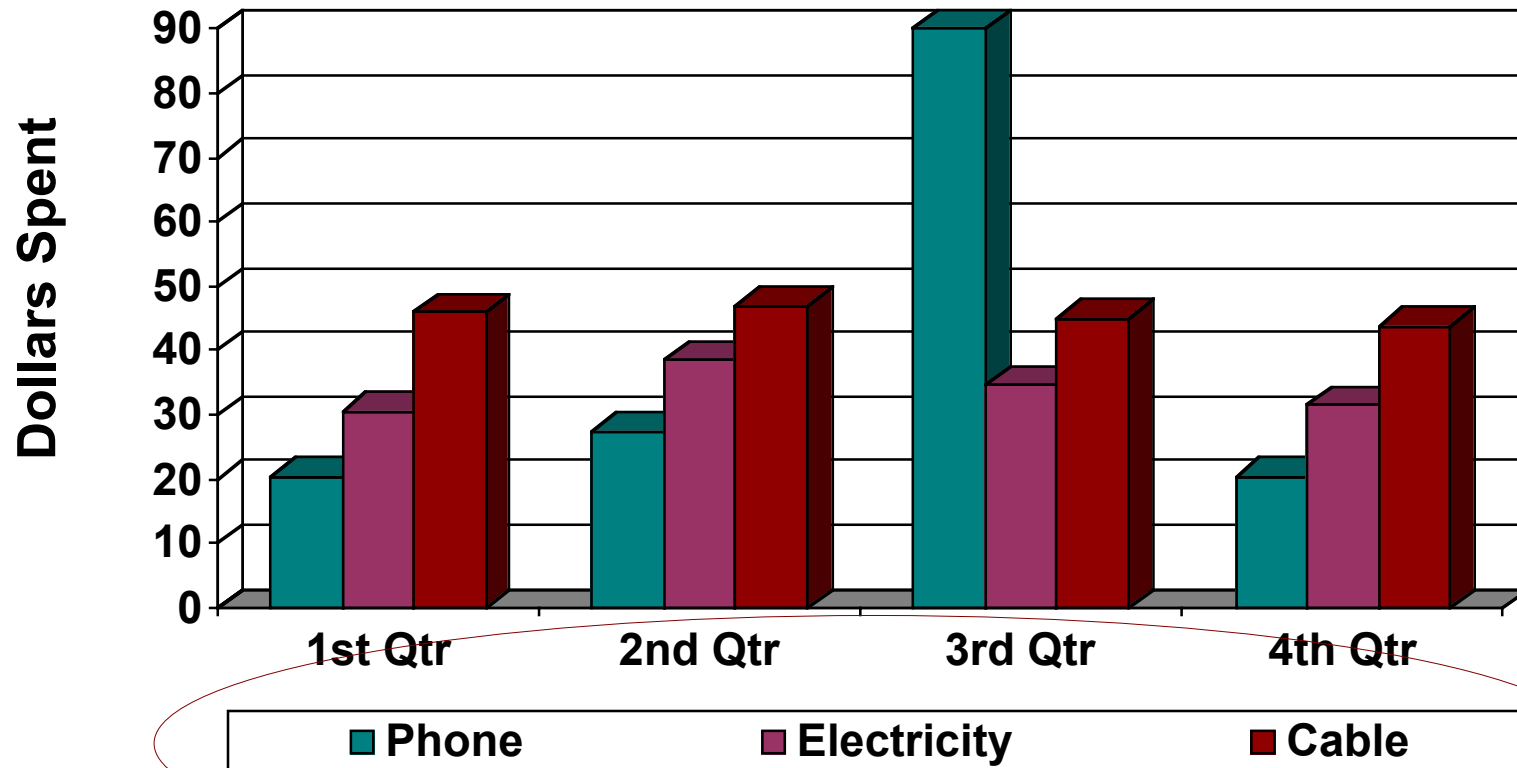


The labels for the x and y axes are clearly communicated, both in conceptual design and in visual style.

# Dollars Spent on Utilities at the Brown's House

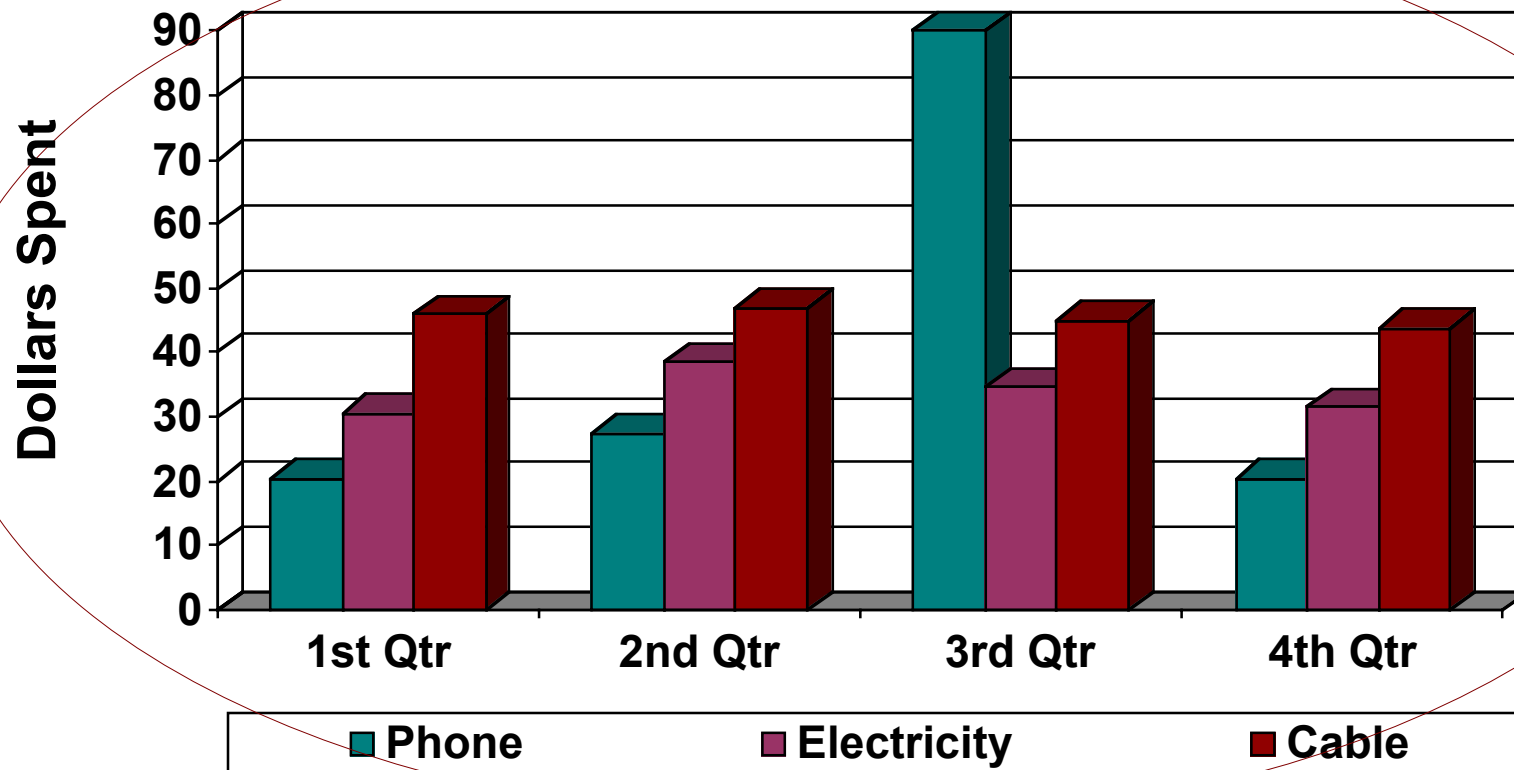
## Year: 1999

---



Essential (and only essential) information is included in the chart.

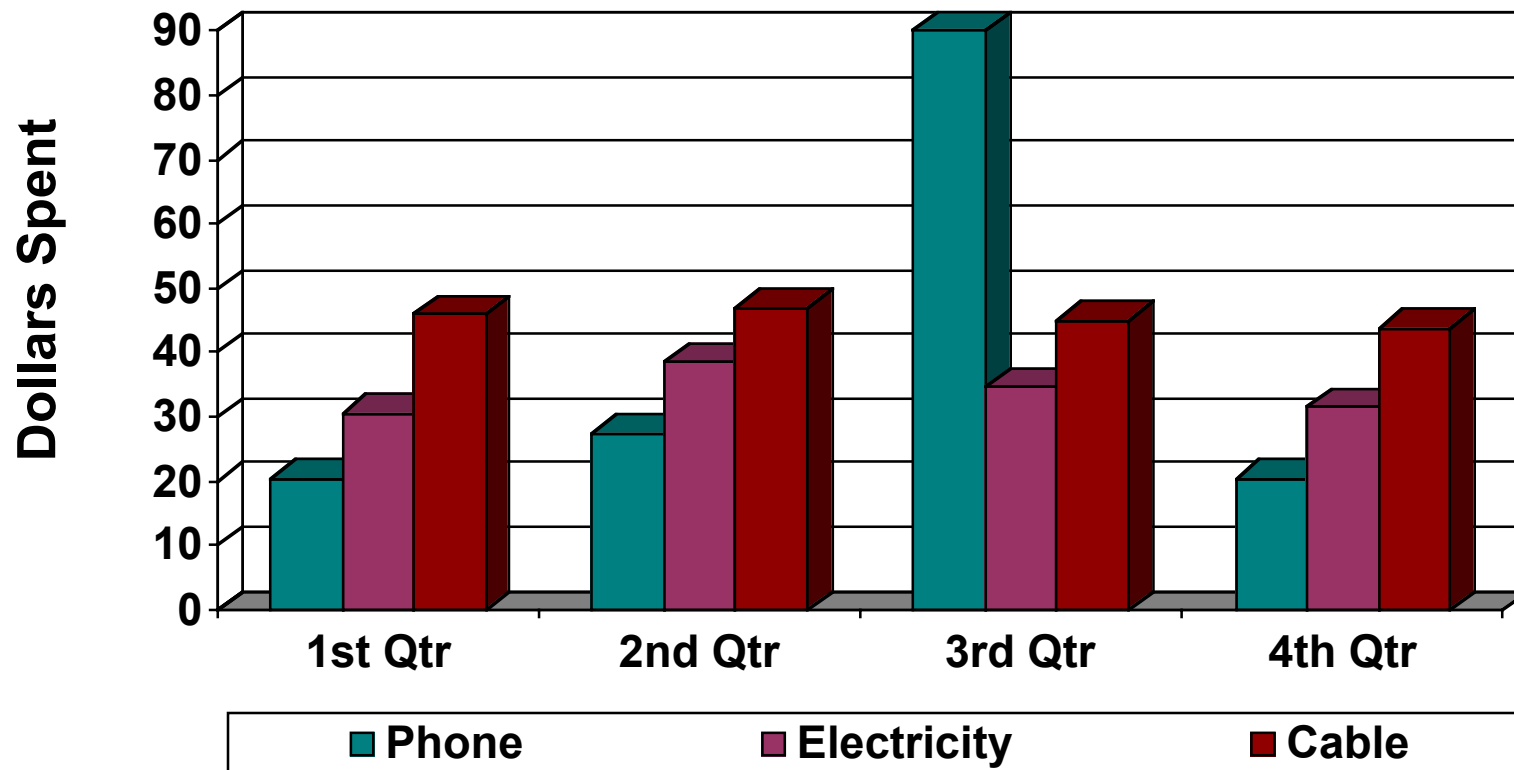
# Dollars Spent on Utilities at the Brown's House Year: 1999



The chart conveys the information that my audience will be looking for.

# Dollars Spent on Utilities at the Brown's House Year: 1999

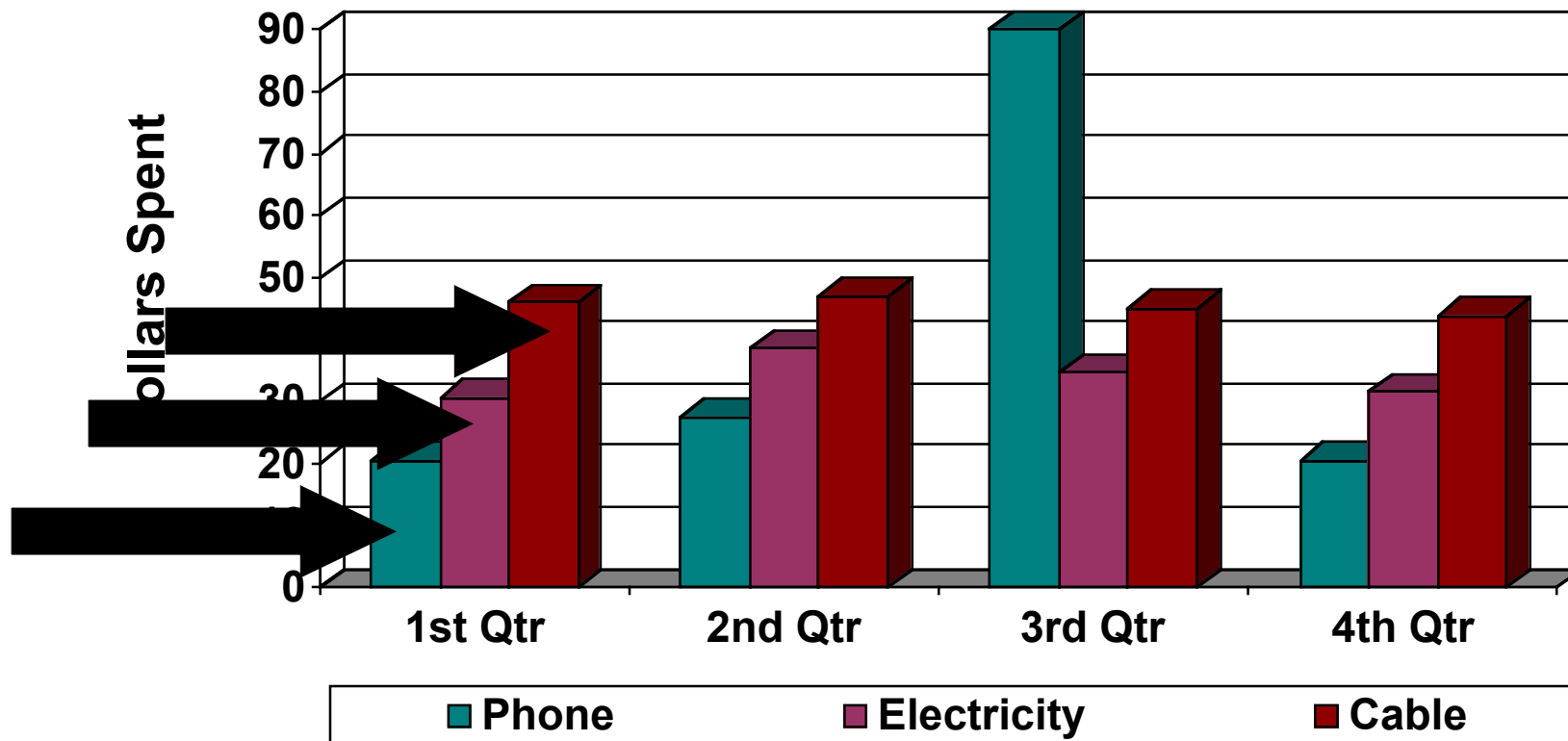
---



The data on the chart can be easily interpreted by the audience within a few seconds, not minutes.

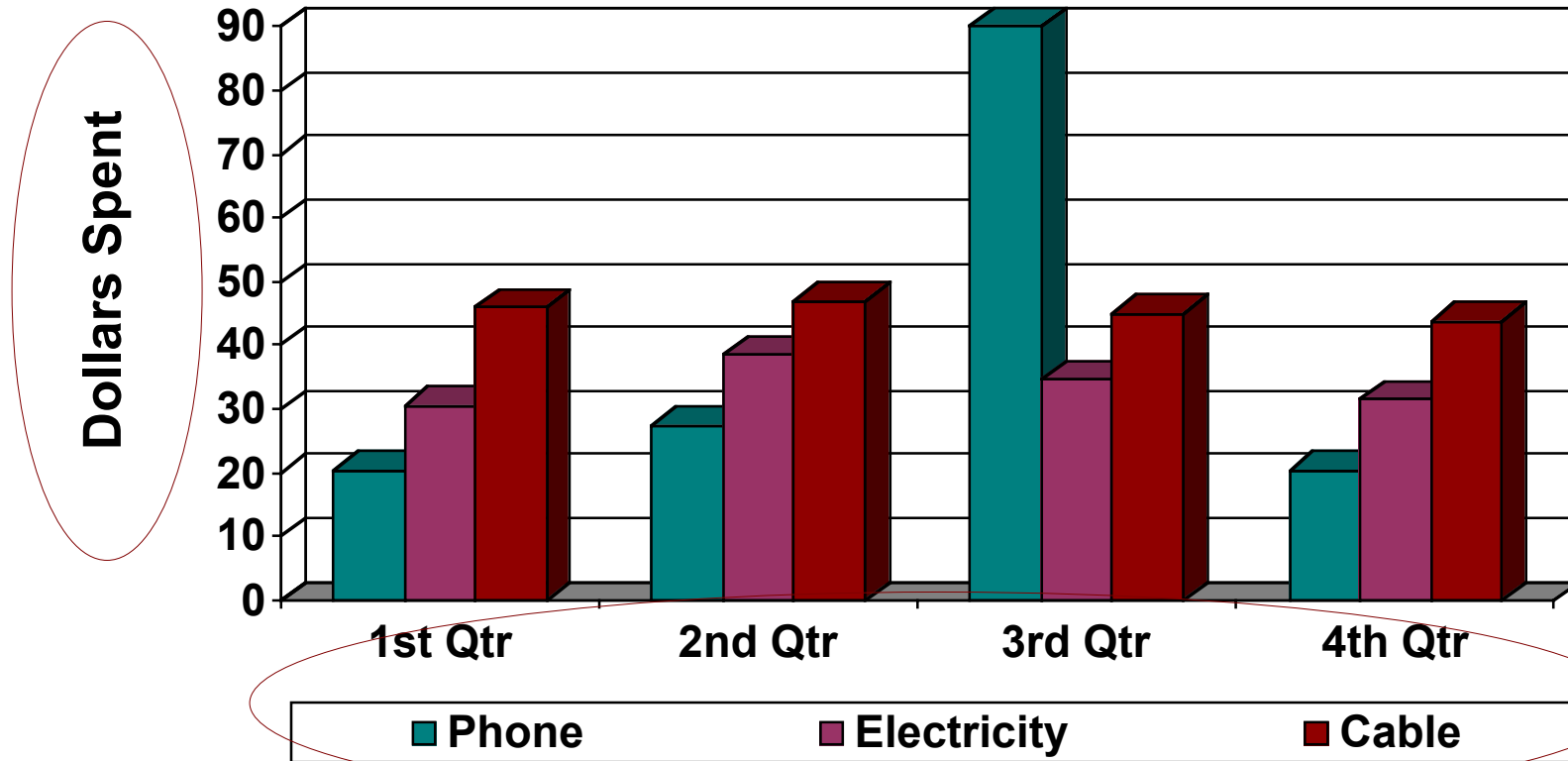
# Dollars Spent on Utilities at the Brown's House

## Year: 1999



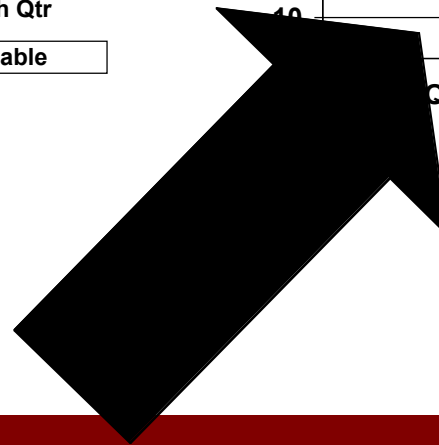
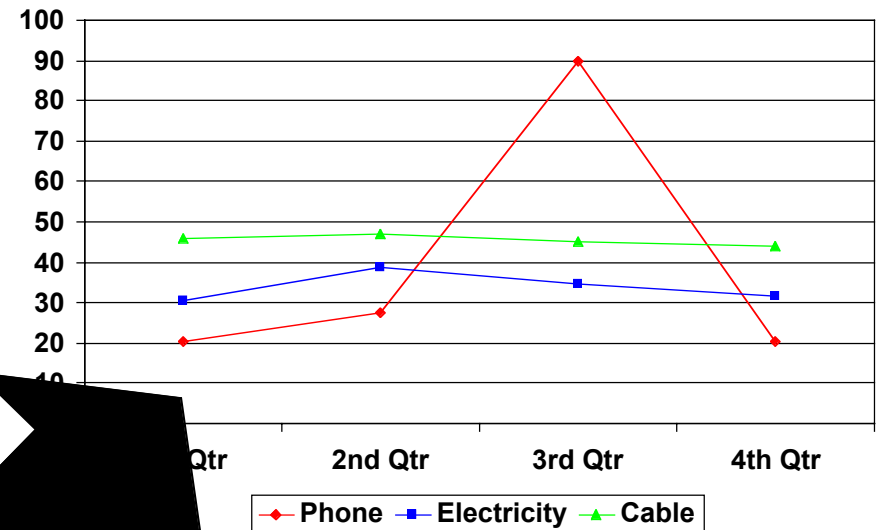
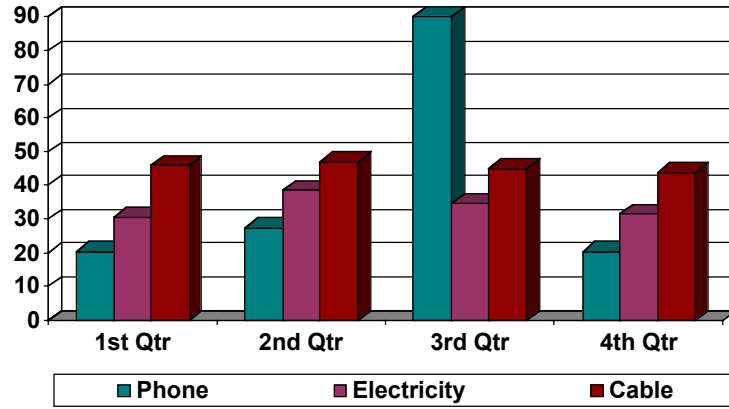
The chart avoids the combined use of red and green, blue and yellow, and blue and green.

# Dollars Spent on Utilities at the Brown's House Year: 1999



The lettering on this chart is kept large and bold, and matches the font size and style in the remaining pages and/or slides in my document.

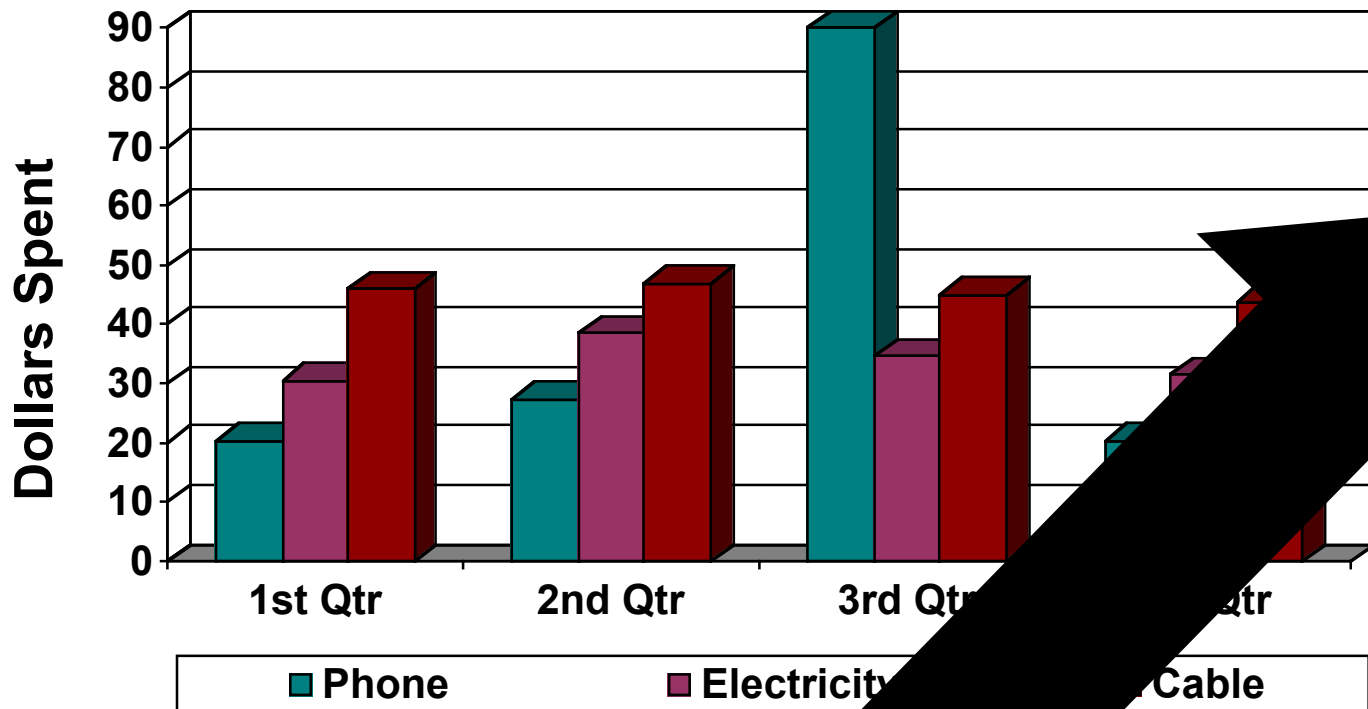
# Dollars Spent on Utilities at the Brown's House Year: 1999



The type of chart used is the best type of chart to display this kind of data.

# Dollars Spent on Utilities at the Brown's House

## Year: 1999



- Electricity and cable rates are fixed monthly payments.

Phone bills increased third quarter, the quarter that we got cell phones for the kids.

The page on which the chart resides includes narrative information about the data.